

SS4143

14.3 kWh Advanced LiFePO4 Battery



Guarantee on Product
Material & Workmanship



Energy Output
Warranty

Our SS4143 lithium iron phosphate battery system boasts a modular design which can be wall or floor mounted. You can easily scale its capacity by connecting multiple units in parallel, making it ideal for various applications.

Features



High efficiency



Long life cycle



Green technology



Excellent safety



High energy density



Stable discharge platform



High temperature performance



High charge & discharge rate

Applications



Off-Grid Systems



Hybrid Systems



Grid Tied Systems



Charger Systems



Residential UPS Systems

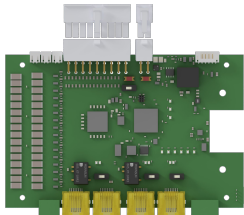


Commercial UPS Systems






SS4143	
Cell Chemistry	Lithium Iron Phosphate (LiFePO4)
Cell Manufacturer	CATL
Rated Capacity	14.3 kWh
Nominal Power @0.7C	10.0 kW
Nominal Voltage	51.2V
Operational Voltage	44.8 - 55.6Vdc
Max Charge & Discharge Current	200A
Cycle Life @25°C	≥6000
Charging Efficiency	99%
Operational Temperature	0°C to 50°C
Communication	CANBUS / RS485
Weight per module	118kg
Dimensions (W x D x H)	674mm x 187mm x 606mm
Storage Duration	6 months @25°C
Safety Standard Compliance	CE / EN 55016 / IEC 61000
Cell Certificate	IEC 62619 / UN38.3 / UN3480 / UL 1642 / UL 1973

Battery Management System

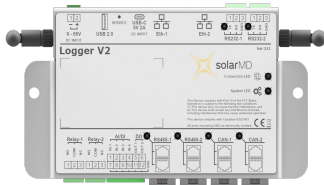


Each Solar MD battery has its own Battery Management System (BMS) designed and built in-house. The BMS handles the internal functions of each battery. In setups with multiple batteries, the BMS independently manages each one, ensuring a stable energy flow throughout the battery system.

-  Data collection & storage for monitoring
-  Efficient charging & discharging control
-  Precise cell voltage measurement
-  Built in temperature sensors
-  Voltage management to prevent damage
-  Cell balancing for extended lifespan
-  SOC Calculation & Control
-  CANBUS & RS485 Communication
-  CE / IEC61000
-  2x Relays Isolated

Monitoring & Control

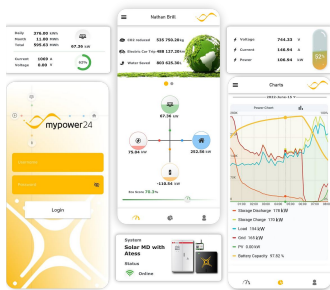
The EMS integrates seamlessly with various brands and devices, including energy meters, generators, and inverters. This capability enables real-time adjustments to energy consumption and production, empowering you to make informed decisions for optimal system management. Regular reports provide insights into energy consumption, cost savings, and environmental impact.



Logger V2 (The Device)

The High-Performance Logger V2 offers easy and fast communication with automatic device discovery and connection.

- **Interfaces** include CAN Bus, RS232, RS485, Ethernet, and Wi-Fi (client and station).
- Integrated **programmable relays**, digital inputs, digital outputs, analogue input, analogue output for load control.
- **Communicates with** supported inverters, energy meters, weather stations, and other energy devices.



mypower24 (The Platform)

mypower24 is a comprehensive management platform designed to simplify and centralise the control of your energy devices. Seamlessly integrating with your Logger V2, mypower24 offers a robust suite of features that effectively manage and optimise your energy infrastructure:

- **Real-Time Data & Insights:** Gain valuable insights into your energy usage with real-time data visualisation and historical records.
- **Safe & Secure:** High-security standards via certified authentication and encrypted data transfer.
- **Convenient Remote Management:** Remotely manage your system & devices for maximum efficiency.



Contact Us



021 555 2181



076 280 4053



Info@solarmd.co.za



solarmd.com